

# Solahart Split System MDV Series Electric Boosted



## KEY BENEFITS

- Save 55% to 85% of your water heating energy consumption\*
- Hot water regardless of the weather
- Can qualify for valuable government environmental incentives\*
- Reduced energy use can save up to 1.7 to 3.1 tonnes of CO2 emissions per annum\*
- Space efficient and flexibility of installation

## KEY FEATURES

- Stylish slimline design
- Minimum visual impact
- Choice of collectors to suit high to low solar gain areas
- Toughened, hail resistant collector glass
- Storage tank can be installed indoors or outdoors
- Ceramic lined tank
- Electric or gas booster



0 800 1 76524278  
www.solahart.co.id  
@Solahart\_Id  
Solahart Indonesia  
@solahartindonesia



Check Our  
Authorised Dealer  
Scan This Code

Authorised Dealer



## SPLIT SYSTEM

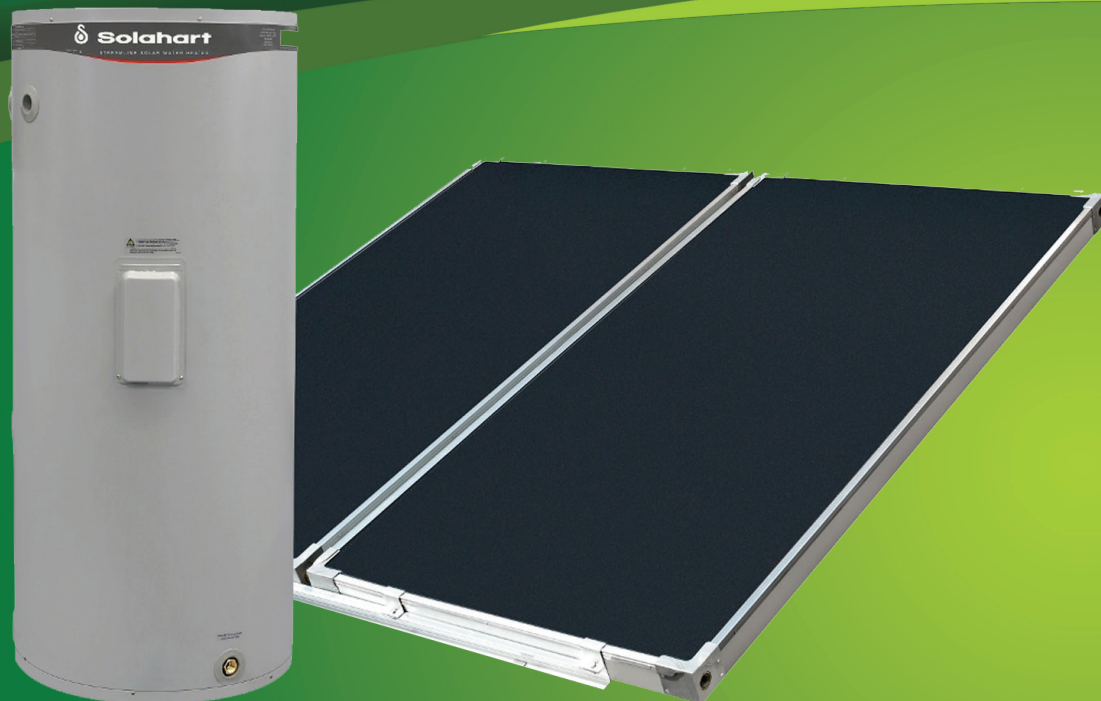
MDV SERIES ELECTRIC BOOSTED

272 | 273 MLV

322 | 323 MLV

412 | 413 | 414 MLV

www.solahart.co.id



The Solahart MDV series is an open circuit split system solar water heater with roof mounted slimline collectors and a tank that can be installed discreetly on the ground. It is suitable for use in low to high solar gain areas.

The MDV solar storage tank systems provide an increase in solar energy savings. Solar energy is transferred directly to the water as it is moved through the collectors by an electric circulator and the heated water is stored in the ground mounted tank.

The MDV series electric boosted models are equipped with an in-tank element to ensure a supply of hot water during periods of poor or no solar gain. Alternatively, this system can be installed as a preheater with an inline Solahart gas booster water heater.

### MLV and MCSV Systems

Model	272 MLV	273 MLV	322 MLV	323 MLV	412 MLV	413 MLV	414 MLV
Tank Model	270MDV		320MDV		410MDV		
Collector	L						
No Of Collector	2	3	2	3	2	3	4

### Solar Storage Tank

Tank Model		270MDV	320MDV	410MDV
Storage Capacity	litres	270	320	410
Boost Capacity	litres	140	170	220
Installation		Indoor / Outdoor		
Solar Controller Kit	PN299280	1	1	1
Weight Empty	kg	78	88	109
	lbs	172	194	241
Weight Full	kg	348	414	525
	lbs	767	912	1158
Height	m	1.395	1.640	1.840
	in	54.9	64.6	72.5
Width	m	0.640	0.640	0.690
	in	25.2	25.2	25.2
Depth	m	0.680	0.680	0.730
	in	26.8	26.8	28.7

### Collectors General

		L
Aperture (heating) area	m <sup>2</sup>	1.87
length	mm	1937 / 1996
width	mm	1022 / 1043
height	mm	77 / 82
Capacity	litres	3
Working Pressure	kPa	1000

### Electric Boost Specifications

Heating Unit Type		Copper sheath immersion element		
Supply Voltage		240V 50Hz		
Recovery rate @ 240 V and temperature rise of :				
Rating kW	Current Amps	30°C litres/hours	40°C litres/hours	50°C litres/hours
3.6	15	103	77	62

### Water Supply

TPR valve setting	kPa	1000	psi	145
ECV* setting	kPa	850	psi	125
Max. supply pressure				
with ECV	kPa	680	psi	100
without ECV	kPa	800	psi	115
Min. supply pressure	kPa	200	psi	29
Water Connections	cold	Rp 3/4		
	hot	Rp 3/4		
	solar	DN15 compression fittings (solar hot and solar cold inlets to tank Rp 3/4)		

\* Expansion Control Valve (ECV) is not supplied.

### Collector Installation

Roof area dimensions		2	3	4
Length*	m	2.0	2.0	2.0
	in	78.8	78.8	78.8
Width*	m	2.3	3.4	4.5
	in	90.6	133.9	177.2

Solar kits - L collector

Collector kit	PN 12104297	1	1	1
Collector add on kit	PN 12104405	0	1	2

\* An additional 0.9m (35.4in) should be left on all four sides of the installation for safe access and servicing.